

2026 SORENTO X-LINE SX 2.5T AWD

MODEL/OPT.CODE: 7AC6485 / 10
 EXTERIOR COLOR: ROAD RIDER BROWN
 INTERIOR COLOR: BLACK
 VEHICLE ID NUMBER: 5XYRKDJF1TG470192
 PORT OF ENTRY: WEST POINT

Sold To: IA001
 Kia of Des Moines
 4475 MERLE HAY ROAD
 DES MOINES IA 50310

Ship To: IA001



STANDARD FEATURES

STANDARD X-LINE EX AWD FEATURES

MECHANICAL
 2.5L Turbo Engine; 281hp & 311 lb-ft Torque
 8-Speed Dual Clutch Auto Transmission
 All-Wheel Drive w/ Terrain Mode

ADVANCED DRIVER-ASSISTANCE SYSTEMS

Forward Collision-Avoidance Assist - Cyclist/Jct Turning
 Blind-Spot Collision Warning
 Rear Cross-Traffic Collision-Avoidance Assist
 Lane Keeping Assist & Lane Following Assist
 Driver Attention Warning & High Beam Assist
 Safe Exit Assist & Highway Driving Assist
 Parking Distance Warning - Forward / Reverse
 Navigation-Based Smart Cruise Control-Curve

SAFETY

Dual Front Advanced Airbags & Driver's Knee Airbag
 Dual Front and Rear Seat-Mounted Side Airbags
 Full-Length Side Curtain Airbags

INTERIOR, COMFORT & CONVENIENCE

12.3" Panoramic Display w/ Navigation
 Wireless Android Auto & Apple CarPlay
 Kia Connect w/Comp 3-Yr Ultimate.* Where Available**
 SIRIUSXM® w/Free 3-Mo. Subscription*
 Bose Premium Audio System
 Dual-Zone Automatic Climate Control w/ Auto Defogger
 Smart Key w/ Push Button & Remote Start
 Wireless Charger (Front) / Front & Rear USB Charge Ports
 Power Adjustable Driver & Front Passenger Seats
 SynTex Seating Material w/ Heated Front Seats
 2nd Row Captain's Chairs (2 Seats)
 One-Touch Slide & Fold 2nd Row Seats
 Rear Occupant Alert w/ Sensors

EXTERIOR

20" Gloss Black Alloy Wheels
 Panoramic Sunroof w/ Power Sunshade
 Smart Power Liftgate
 LED Projector Headlights w/ Auto-On/Off
 LED Positioning Lights & LED Fog Lights
 Power Adj. Heated Outside Mirrors w/LED Turn Signals
 Roof Rack & Compact Spare Tire

WARRANTY

10 Year/100,000 Mile Limited Powertrain Warranty
 5 Year/60,000 Mile Limited Basic Warranty
 5 Year/60,000 Mile Roadside Assistance

*Additional terms and conditions apply.

**Kia Connect may be currently unavailable for some Model Year 2022 and newer vehicles sold or purchased in Massachusetts; please see owners.kia.com for more information.

NOTE: When you purchase this vehicle, Kia America, Inc. collects personal information you provide to the dealership. For information on our collection and use of personal information and your rights, please see our Privacy Policy on www.kia.com.

MANUFACTURER'S SUGGESTED RETAIL PRICE ▶

\$ 44,090.00

COMPARE X-LINE SX AWD FEATURES

Added to/in place of std X-LINE EX AWD features

- LED Rear Combination Lights
- Power Folding Outside Mirrors
- Surround View Monitor
- Blind-Spot View Monitor
- Ventilated Front Seats
- 12.3" Instrument Display
- HomeLink™ Garage Opener
- Heated Steering Wheel
- Retractable Rear Door Sunshades
- Rain-Sensing Wipers
- Premium Interior Trim
- Aluminum Sport Pedals

Included
 Included
 Included
 Included
 Included
 Included
 Included
 Included
 Included
 Included
 Included
 Included
 Included

ADDITIONAL INSTALLED EQUIPMENT:
 (In addition to or in place of standard features)
 Carpeted Floor Mats

\$235.00

MSRP INCLUDING OPTIONS

\$ 44,325.00

INLAND FREIGHT AND HANDLING

\$ 1,495.00

TOTAL MANUFACTURER'S SUGGESTED RETAIL PRICE ▶

\$ 45,820.00

TOTAL ADDITIONAL WEIGHT: 6.6



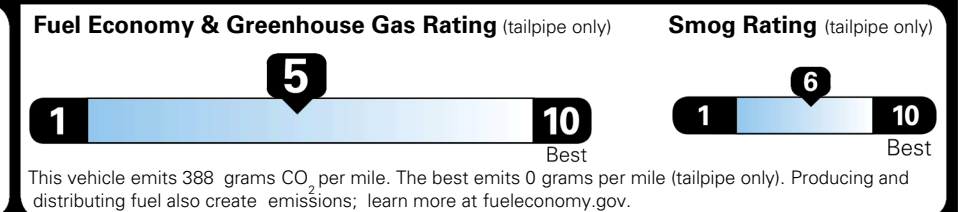
EPA DOT Fuel Economy and Environment

Gasoline Vehicle



You spend \$2,250
 more in fuel costs over 5 years compared to the average new vehicle.

Annual fuel cost \$2,150



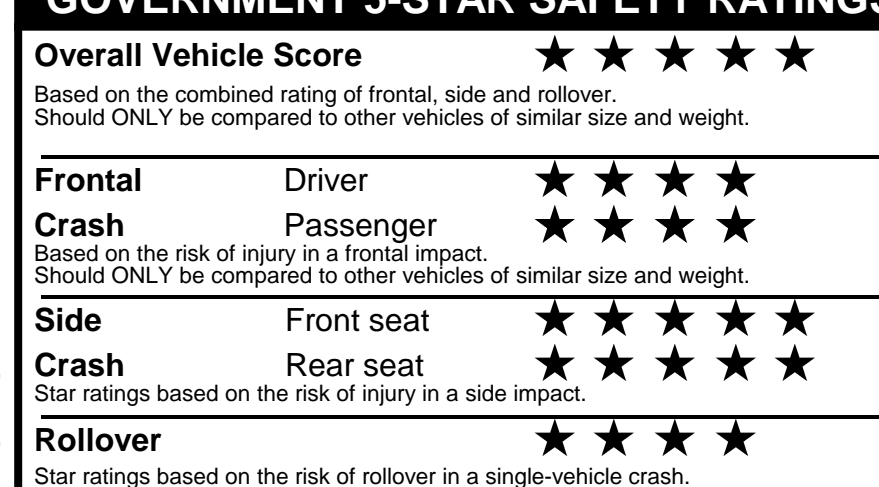
Actual results will vary for many reasons, including driving conditions and how you drive and maintain your vehicle. The average new vehicle gets 29 MPG and costs \$8,500 to fuel over 5 years. Cost estimates are based on 15,000 miles per year at \$ 3.30 per gallon. MPGe is miles per gasoline gallon equivalent. Vehicle emissions are a significant cause of climate change and smog.

fueleconomy.gov

Calculate personalized estimates and compare vehicles



GOVERNMENT 5-STAR SAFETY RATINGS



Star ratings range from 1 to 5 stars (★★★★★) with 5 being the highest.
 Source: National Highway Traffic Safety Administration (NHTSA).
www.safercar.gov or 1-888-327-4236

Manufacturer's suggested retail price includes Manufacturer's recommended pre-delivery service. License and title fees, state and local taxes and other dealer installed options and accessories are not included in the manufacturer's suggested retail price.

PARTS CONTENT INFORMATION

FOR VEHICLES IN THIS CAR LINE U.S./CANADIAN PARTS CONTENT: 55 %

MAJOR SOURCES OF FOREIGN PARTS: KOREA: 30%

NOTE: PARTS CONTENT DOES NOT INCLUDE FINAL ASSEMBLY, DISTRIBUTION, OR OTHER NON-PARTS COSTS.

FOR THIS VEHICLE FINAL ASSEMBLY POINT: WEST POINT, GA, USA

COUNTRY OF ORIGIN ENGINE (MOTOR): USA

TRANSMISSION: KOREA